

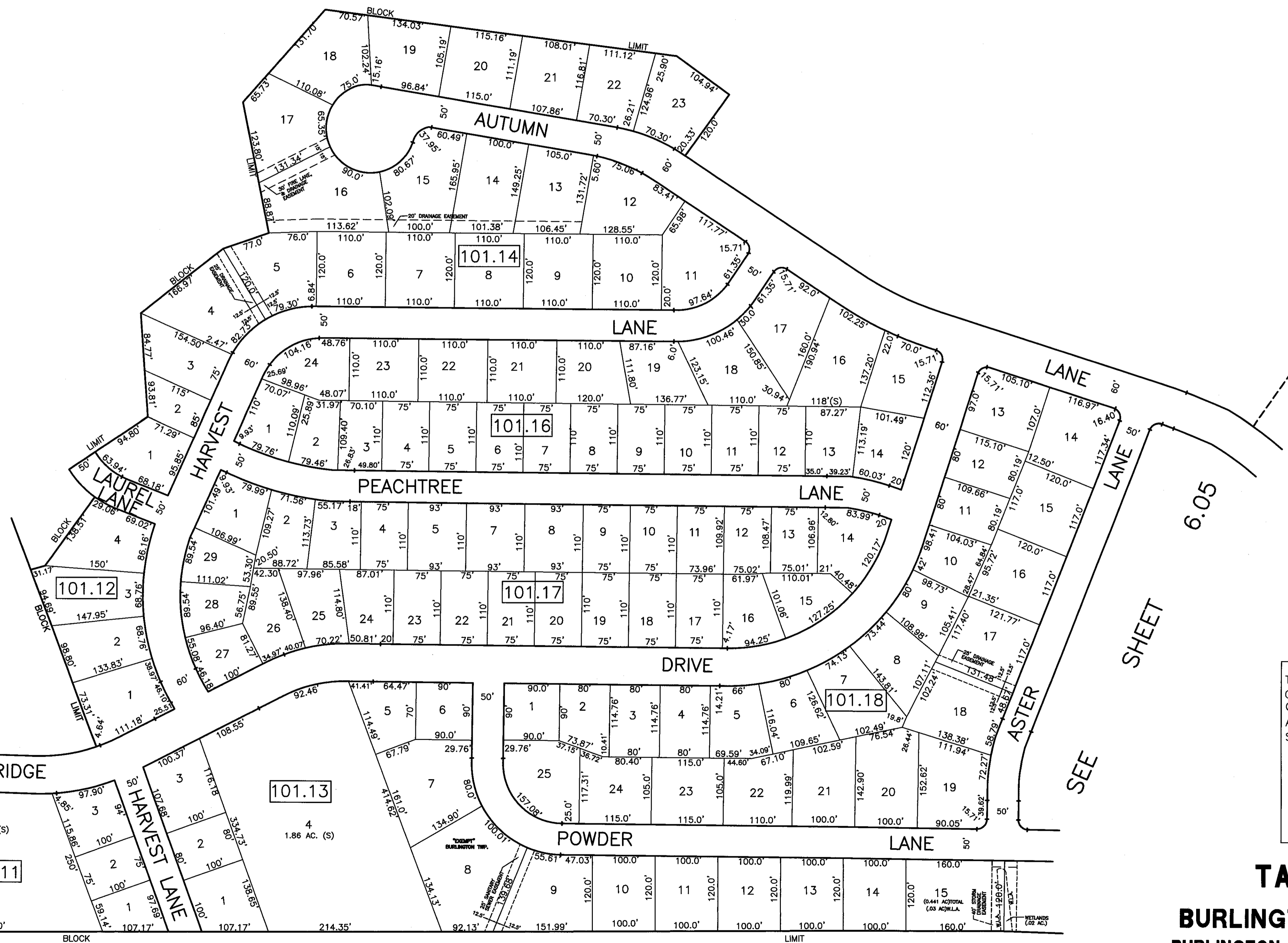
SEE SHEET 6

SEE SHEET 9

SEE SHEET 5.01
PENNSYLVANIA AVE.
N.J.S.H.
DELAWARE AVENUE
ROUTE 131

SEE SHEET 5

SEE SHEET 6.05



THIS SHEET HAS BEEN GIVEN A FORMAL CERTIFICATION BY THE DIVISION OF TAXATION ON JULY 11, 2005, SIGNED BY JAMES COLL AND SANTO DIDONATO ASSIGNED SERIAL NUMBER 863.

TAX MAP
BURLINGTON TOWNSHIP
BURLINGTON COUNTY, NEW JERSEY
SCALE: 1" = 100'
T. RONALD GSELL, P.E. & P.L.S.
200 HIGH STREET, MOUNT HOLLY, N.J.

THIS SHEET IS A DIGITIZED COPY OF THE TAX MAP PREPARED BY HENRY S. HAINES DATED FEBRUARY 1917 AND WAS DONE UNDER THE SUPERVISION OF JAMES R. DATZ, LICENSED LAND SURVEYOR, N.J. LICENSE #24GSO3671900, DATED FEBRUARY 12, 2014. THE APPROVED ORIGINAL IS ON FILE IN THE BURLINGTON TOWNSHIP'S ASSESSOR'S OFFICE.