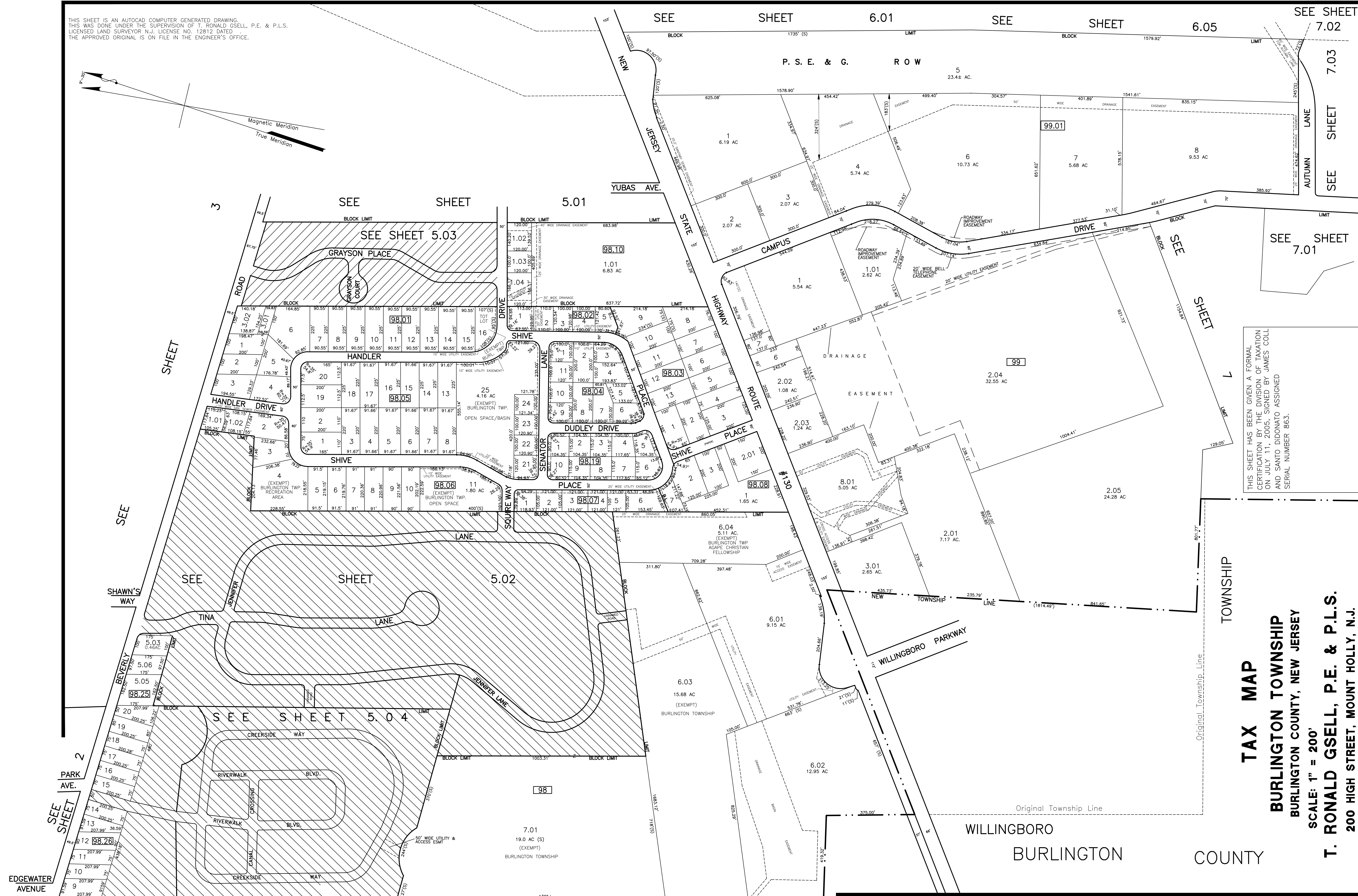
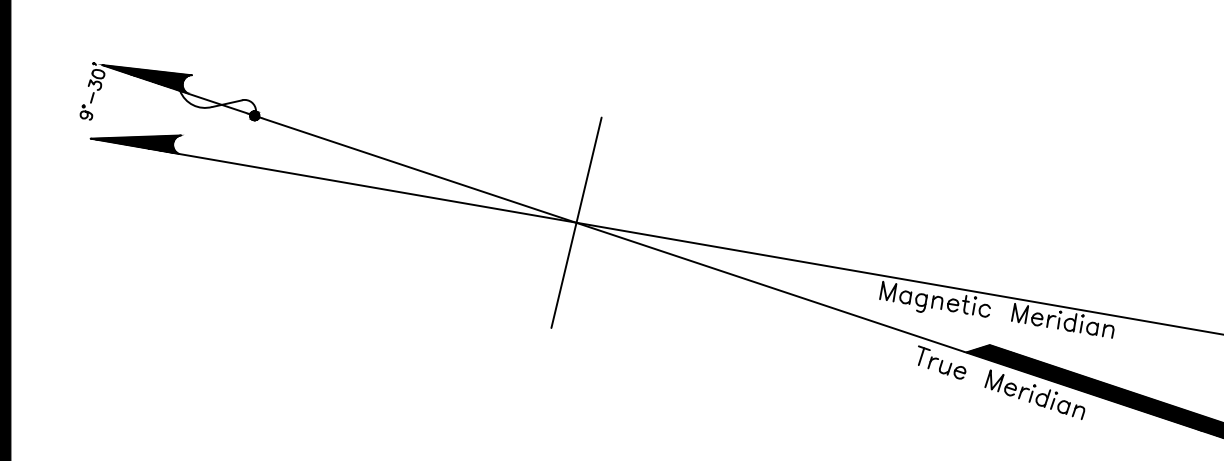


THIS SHEET IS AN AUTOCAD COMPUTER GENERATED DRAWING. THIS WAS DONE UNDER THE SUPERVISION OF T. RONALD GSELL, P.E. & P.L.S. LICENSED LAND SURVEYOR N.J. LICENSE NO. 12812 DATED THE APPROVED ORIGINAL IS ON FILE IN THE ENGINEER'S OFFICE.



THIS SHEET HAS BEEN GIVEN A FORMAL CERTIFICATION BY THE DIVISION OF TAXATION ON JULY 11, 2005, SIGNED BY JAMES COLL AND SANTO DIDONATO ASSIGNED SERIAL NUMBER 863.

TAX MAP
BURLINGTON TOWNSHIP
BURLINGTON COUNTY, NEW JERSEY
SCALE: 1" = 200'
T. RONALD GSELL, P.E. & P.L.S.
200 HIGH STREET, MOUNT HOLLY, N.J.