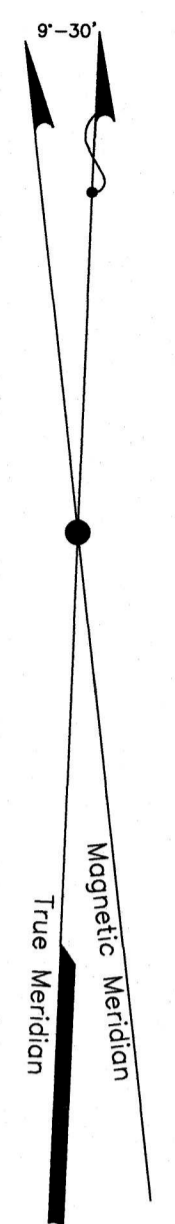


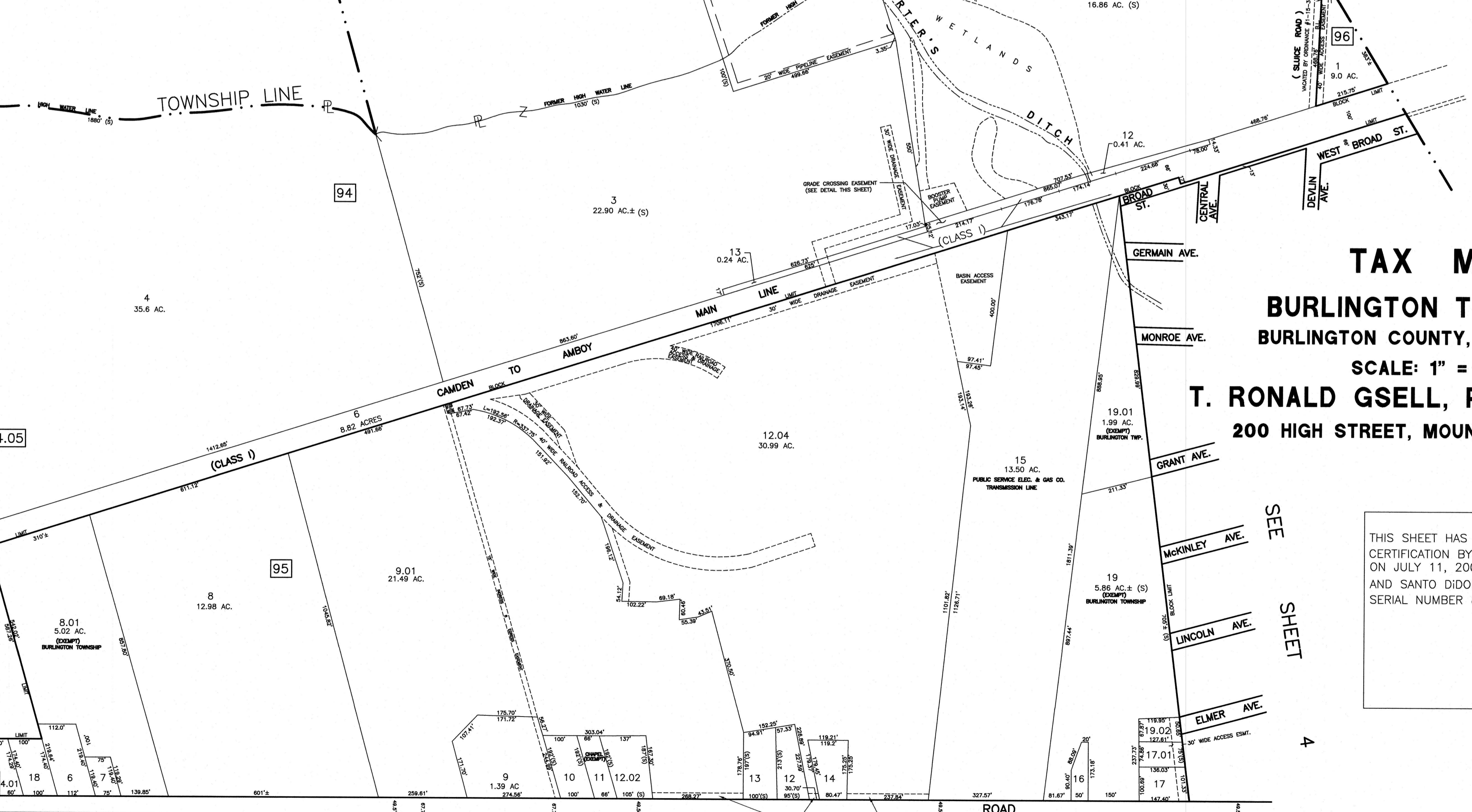
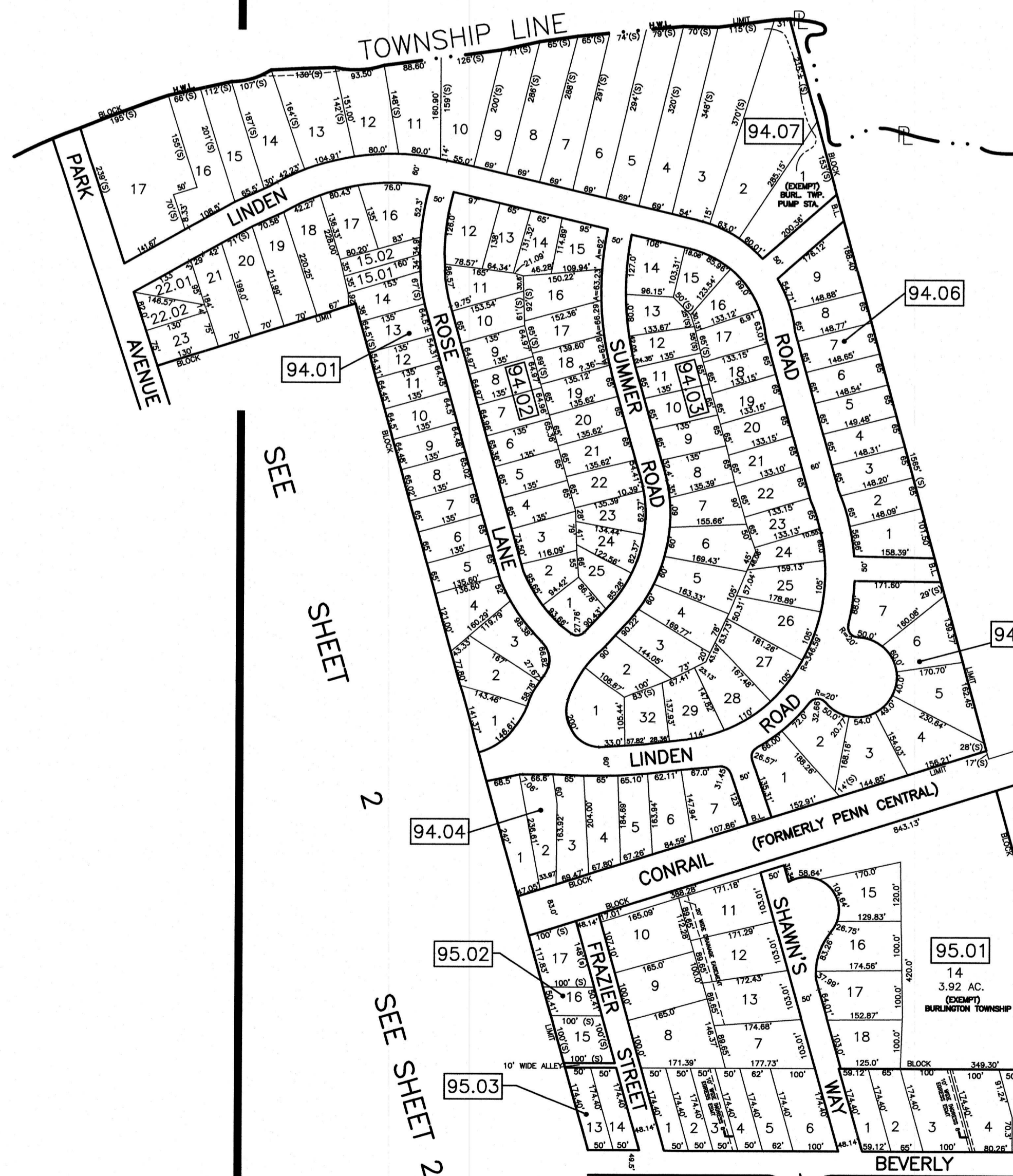
THIS SHEET IS AN AUTOCAD COMPUTER GENERATED DRAWING.
THIS WAS DONE UNDER THE SUPERVISION OF T. RONALD GSELL, P.E. & P.L.S.
LICENSED LAND SURVEYOR N.J. LICENSE NO. 12812 DATED
THE APPROVED ORIGINAL IS ON FILE IN THE ENGINEER'S OFFICE.

GRADE CROSSING EASEMENT
ON LOT 12 IN BLOCK 94 (This Sheet)
Scale: 1" = 60'



DELAWARE RIVER

BURLINGTON BURLINGTON CITY TOWNSHIP



TAX MAP
BURLINGTON TOWNSHIP
BURLINGTON COUNTY, NEW JERSEY
SCALE: 1" = 200'
T. RONALD GSELL, P.E. & P.L.S.
200 HIGH STREET, MOUNT HOLLY, N.J.

THIS SHEET HAS BEEN GIVEN A FORMAL
CERTIFICATION BY THE DIVISION OF TAXATION
ON JULY 11, 2005, SIGNED BY JAMES COLL
AND SANTO DIDONATO ASSIGNED
SERIAL NUMBER 863.

SEE SHEET 2
SEE SHEET 2
SEE SHEET 2
SEE SHEET 5

SEE SHEET 4

SEE SHEET 5.02 SEE SHEET 5 SEE SHEET 5.03 SEE SHEET 5.01