

COUNTY
TOWNSHIP

BURLINGTON
FLORENCE

SPRINGFIELD
BURLINGTON COUNTY
TOWNSHIP
CREEK

ASSISUNK

DRIVE

TRAIL

ARROWHEAD

TRAIL

DRIVE

MOHAWK

SHAWNEE

DRIVE

TOMAHAWK

CHEROKEE

(WIDTH VARIES)

CHEYENNE

ARROWHEAD

COURT

ROAD

ROSS ROAD

27.02

SHEET

SEE

142.09

142.10

142.11

142.12

142.13

142.14

142.15

142

1.04
1.84 AC.
(EXEMPT)
BURLINGTON TWP.

41
18.04 AC.(TOTAL)
(EXEMPT)
BURLINGTON TWP.
W.L.A.
6.73 AC.

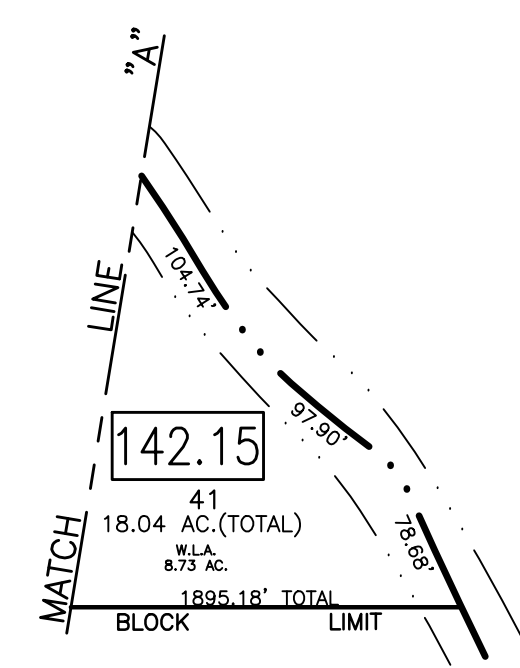
SEE

SHEET

27.07

LIMIT

MATCH



THIS SHEET HAS BEEN GIVEN A FORMAL CERTIFICATION BY THE DIVISION OF TAXATION ON JULY 11, 2005, SIGNED BY JAMES COLL AND SANTO DIDONATO ASSIGNED SERIAL NUMBER 863.

TAX MAP
BURLINGTON TOWNSHIP
BURLINGTON COUNTY, NEW JERSEY
SCALE: 1" = 100' NOVEMBER 12, 1993
T. RONALD GSELL, P.E. & P.L.S.
200 HIGH STREET, MOUNT HOLLY, N.J.

THIS SHEET IS AN AUTOCAD COMPUTER GENERATED DRAWING. THIS WAS DONE UNDER THE SUPERVISION OF T. RONALD GSELL, P.E. & P.L.S. LICENSED LAND SURVEYOR N.J. LICENSE NO. 12812 DATED FEBRUARY 20, 1995. THE APPROVED ORIGINAL IS ON FILE IN THE ENGINEER'S OFFICE.