

SEE SHEET 27.05

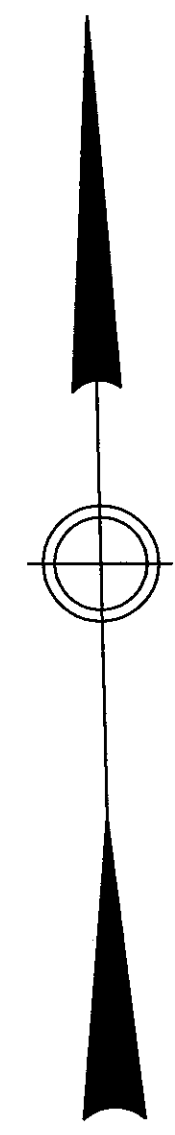
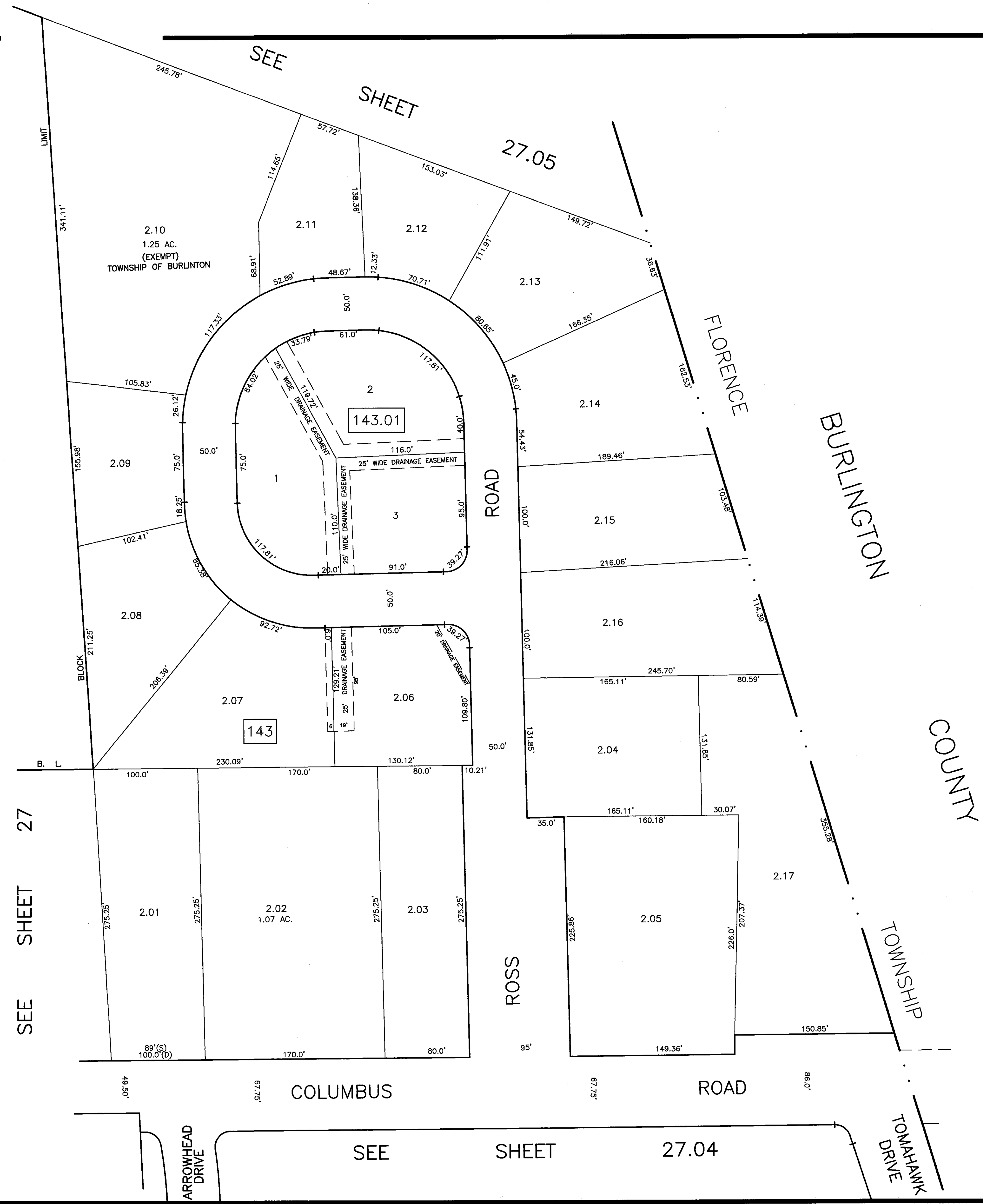
SEE SHEET 27

SEE SHEET 27

SEE SHEET 27

SEE SHEET 27

SEE SHEET 27



THIS SHEET IS AN AUTOCAD COMPUTER GENERATED DRAWING.
 THIS WAS DONE UNDER THE SUPERVISION OF T. RONALD GSELL, P.E. & P.L.S.
 LICENSED LAND SURVEYOR N.J. LICENSE NO. 12812 DATED MARCH 10, 1988.
 THE APPROVED ORIGINAL IS ON FILE IN THE ENGINEER'S OFFICE.

THIS SHEET HAS BEEN GIVEN A FORMAL
 CERTIFICATION BY THE DIVISION OF TAXATION
 ON JULY 11, 2005, SIGNED BY JAMES COLL
 AND SANTO DIDONATO ASSIGNED
 SERIAL NUMBER 863.

TAX MAP
BURLINGTON TOWNSHIP
 BURLINGTON COUNTY, NEW JERSEY
 SCALE: 1" = 50' MARCH 10, 1988
T. RONALD GSELL, P.E. & P.L.S.
 200 HIGH STREET, MOUNT HOLLY, N.J.