

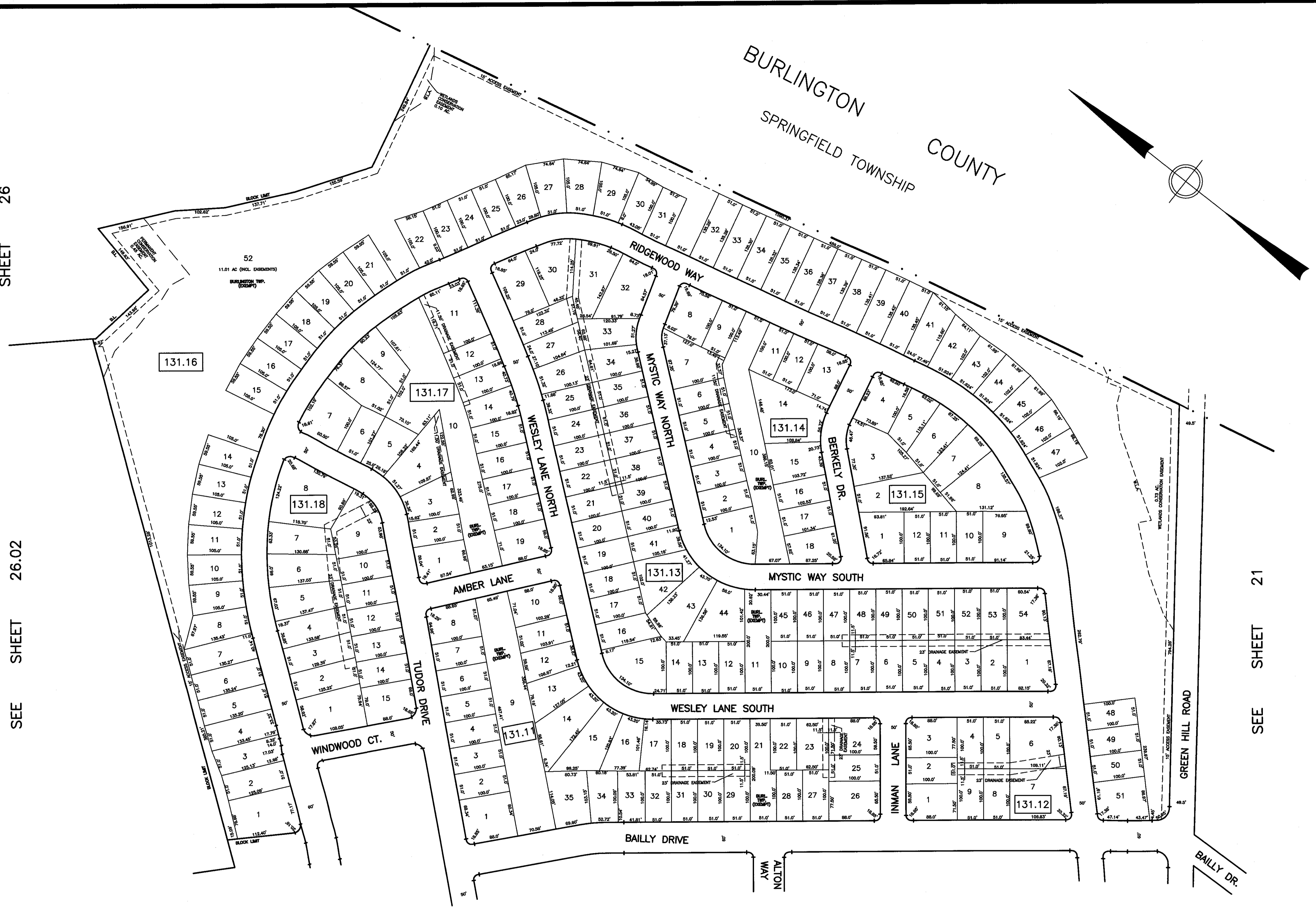
SEE SHEET 26

SEE SHEET 26.02

SEE SHEET 22.01

SEE SHEET 22.02

SEE SHEET 21



THIS SHEET HAS BEEN GIVEN A FORMAL CERTIFICATION BY THE DIVISION OF TAXATION ON JULY 11, 2005, SIGNED BY JAMES COLL AND SANTO DIDONATO ASSIGNED SERIAL NUMBER 863.

THIS SHEET IS AN AUTOCAD COMPUTER GENERATED DRAWING. THIS WAS DONE UNDER THE SUPERVISION OF T. RONALD GSELL, P.E. & P.L.S. LICENSED LAND SURVEYOR N.J. LICENSE NO. 12812 DATED NOVEMBER 22, 1989. THE APPROVED ORIGINAL IS ON FILE IN THE ENGINEER'S OFFICE.

**TAX MAP**  
**BURLINGTON TOWNSHIP**  
**BURLINGTON COUNTY, NEW JERSEY**  
**SCALE: 1" = 100' NOVEMBER 22, 1989**  
**T. RONALD GSELL, P.E. & P.L.S.**  
**200 HIGH STREET, MOUNT HOLLY, N.J.**