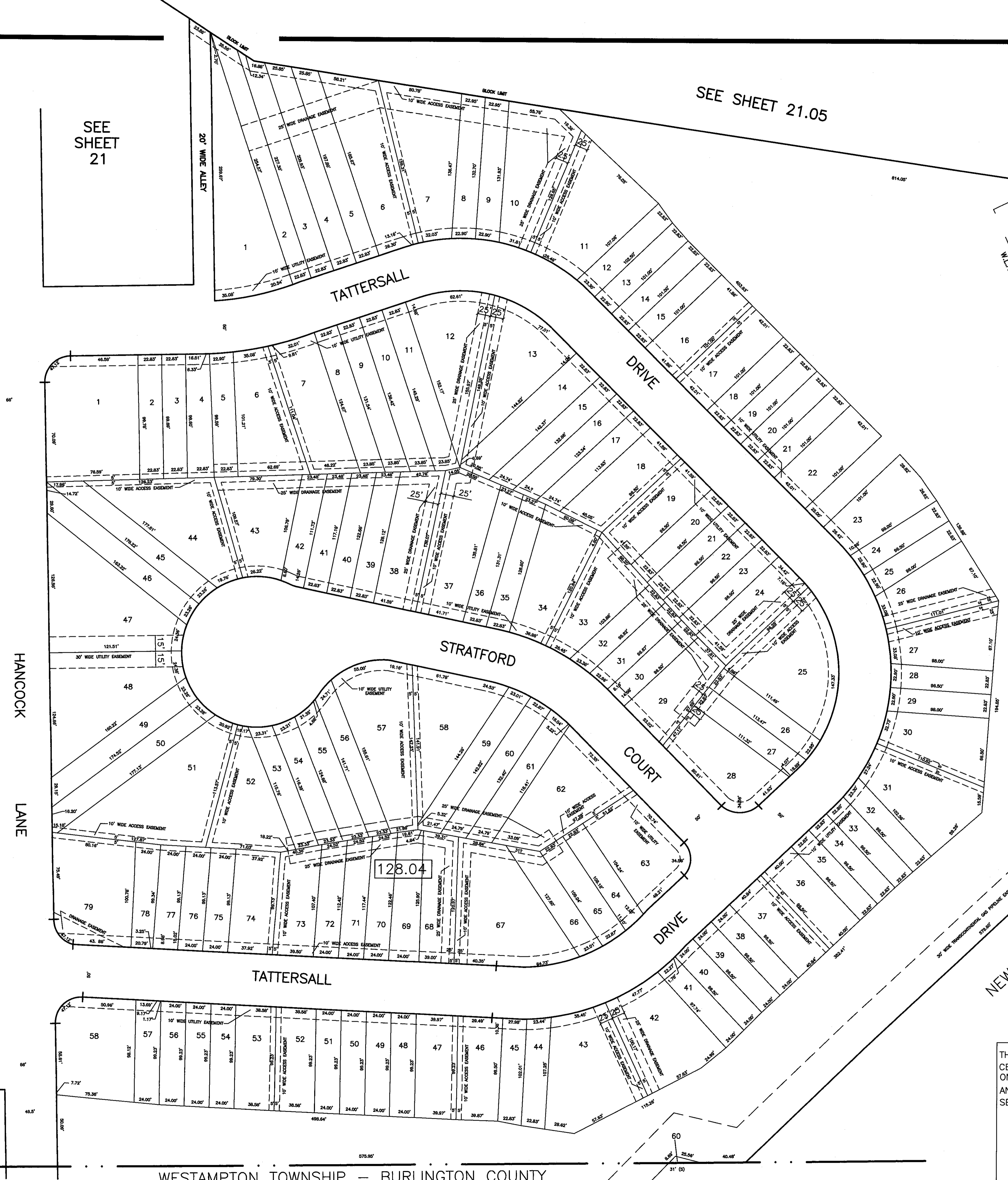


SEE SHEET 21

SEE SHEET 21.05

SEE SHEET 20

SEE SHEET 21



128.03

128.04

59  
6.760 AC.  
W.L.A.  
1.53 AC.  
(EXEMPT)  
BURLINGTON TOWNSHIP

APPROX. CENTERLINE OF 120' LONG  
DRAINAGE EASEMENT FOR CHANNEL  
MAINTENANCE (N.J. TURNPIKE)

THIS SHEET IS AN AUTOCAD GENERATED DRAWING. THIS WAS DONE UNDER THE SUPERVISION OF T. RONALD GSELL, P.E. & P.L.S. LICENSED LAND SURVEYOR N.J. LICENSE #12812, DATED FEBRUARY 6, 1998. THE APPROVED ORIGINAL IS ON FILE IN THE BURLINGTON TOWNSHIP'S ASSESSOR'S OFFICE.

THIS SHEET HAS BEEN GIVEN A FORMAL CERTIFICATION BY THE DIVISION OF TAXATION ON JULY 11, 2005, SIGNED BY JAMES COLL AND SANTO DIDONATO ASSIGNED SERIAL NUMBER 863.

**TAX MAP**  
**BURLINGTON TOWNSHIP**  
**BURLINGTON COUNTY, NEW JERSEY**  
SCALE: 1" = 50' FEBRUARY 6, 1998  
**T. RONALD GSELL, P.E. & P.L.S.**  
200 HIGH STREET, MOUNT HOLLY, N.J.

WESTAMPTON TOWNSHIP - BURLINGTON COUNTY