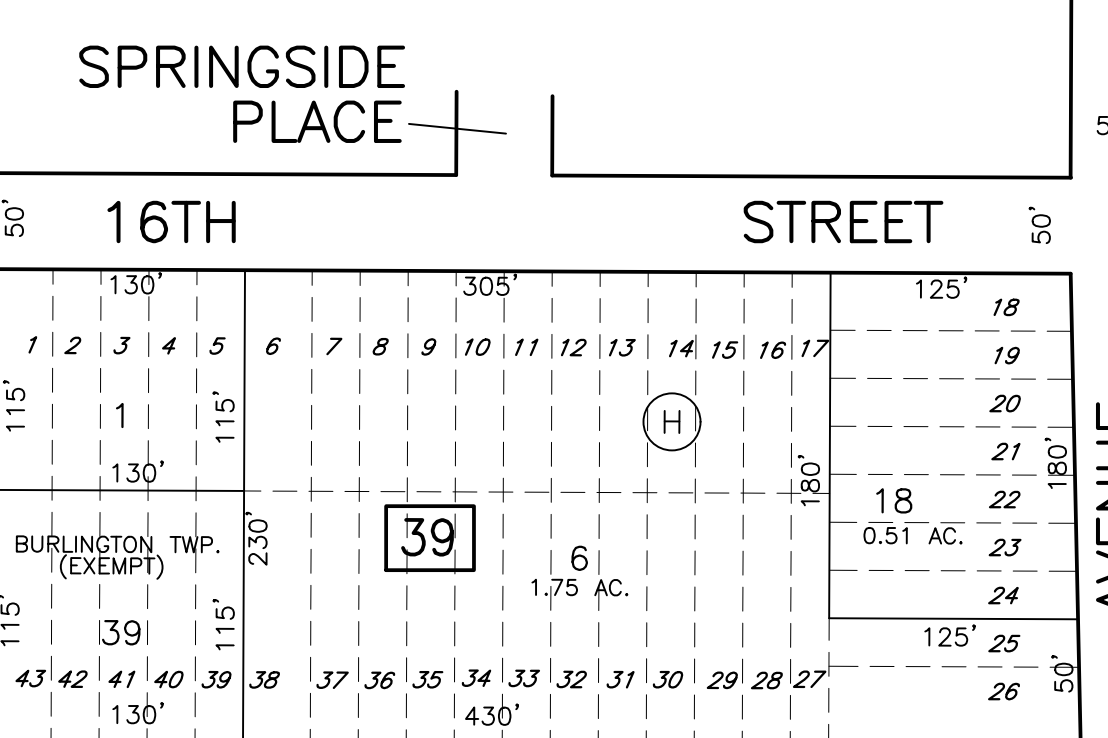
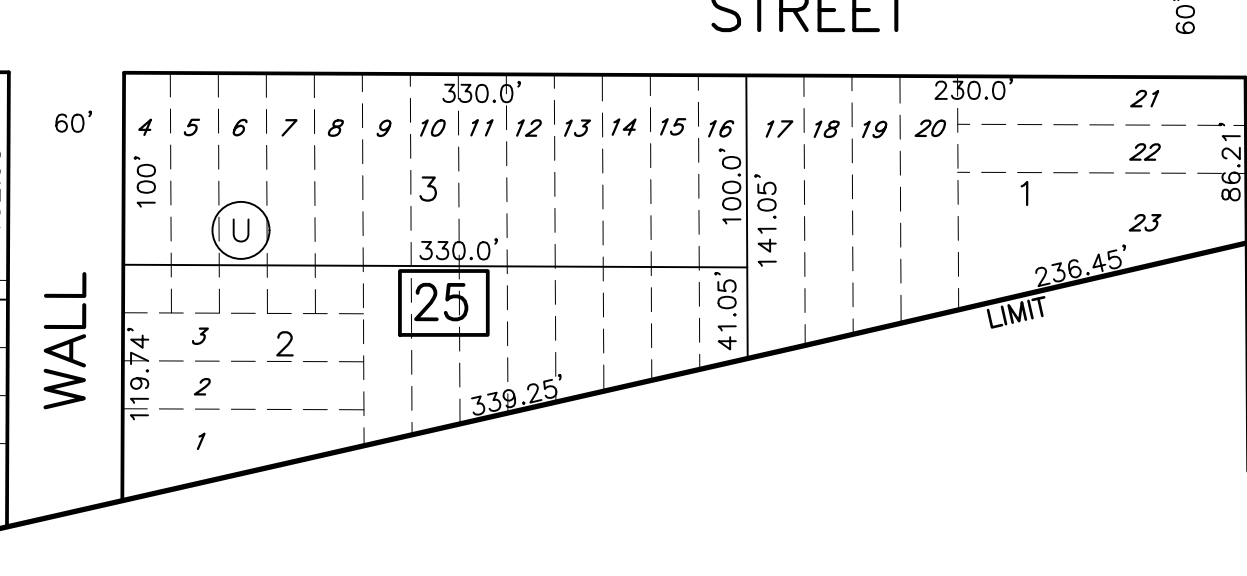
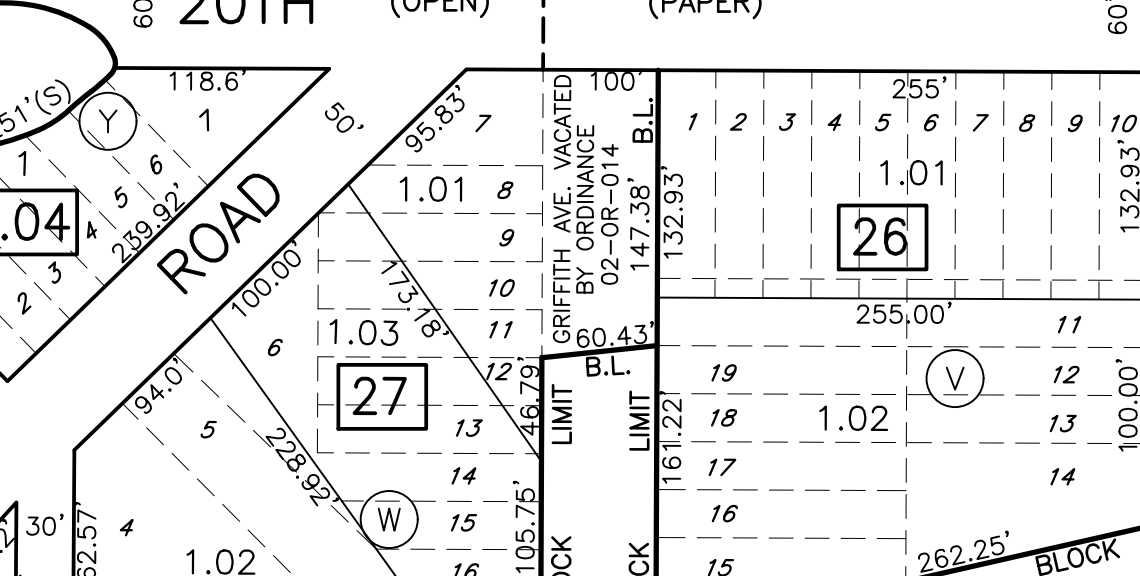
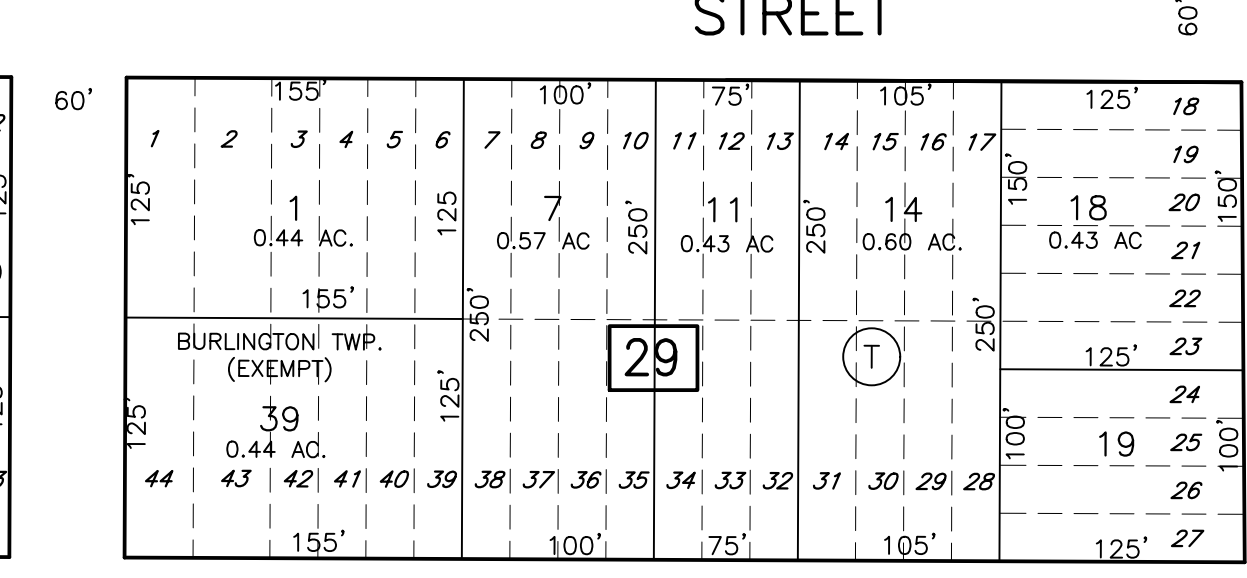
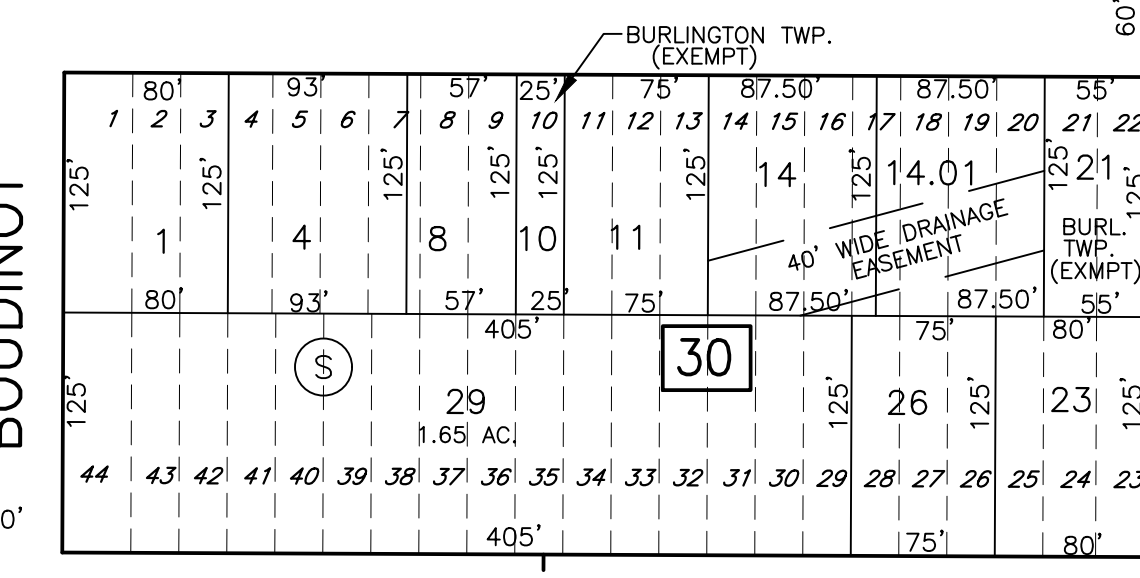
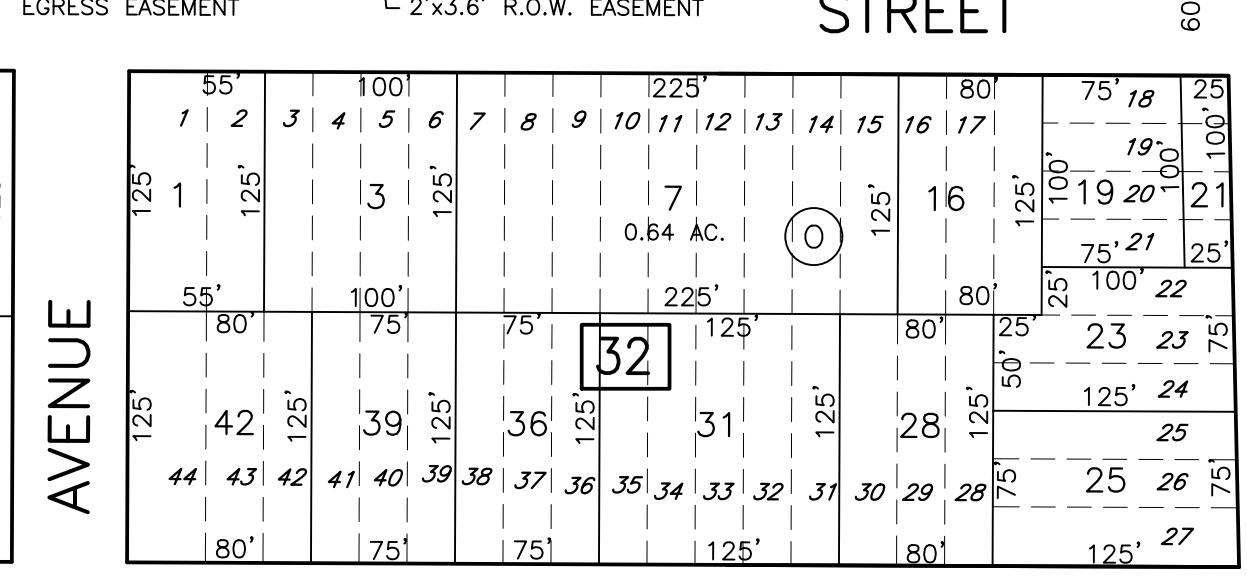
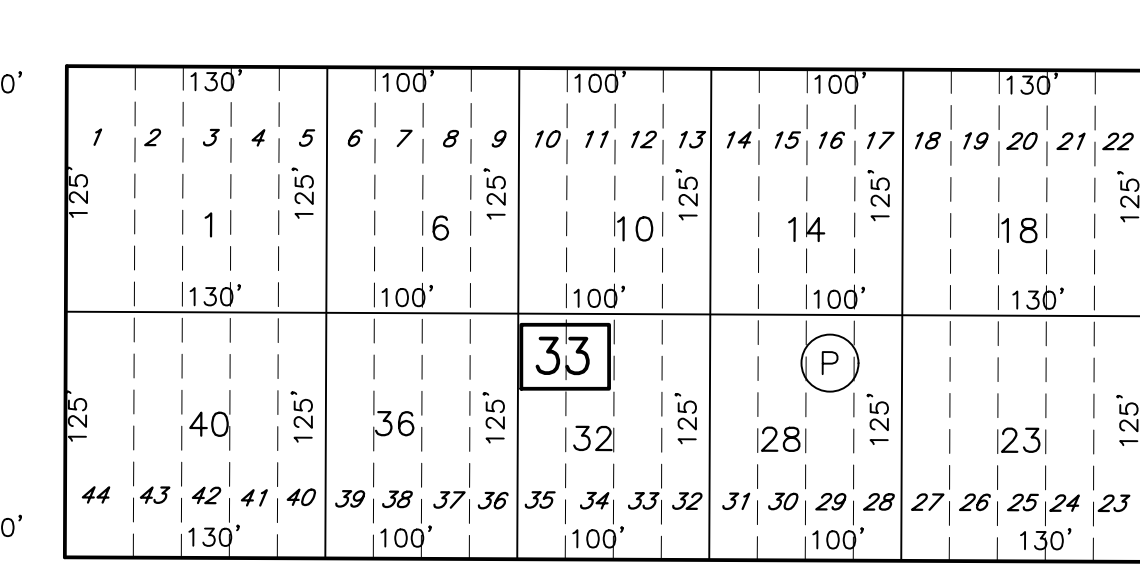
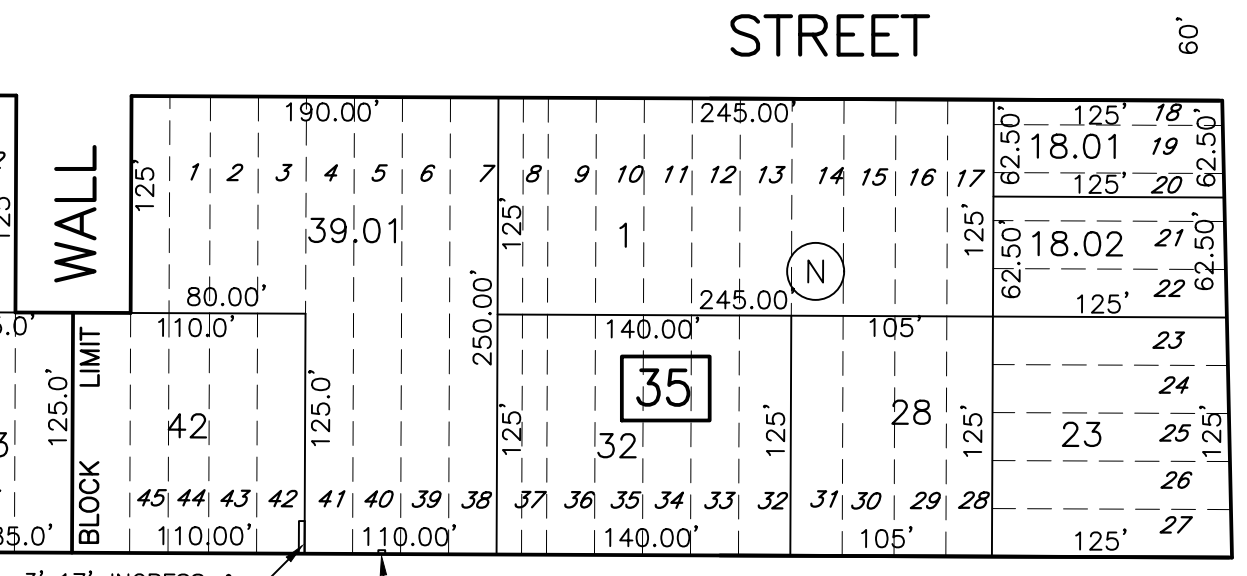
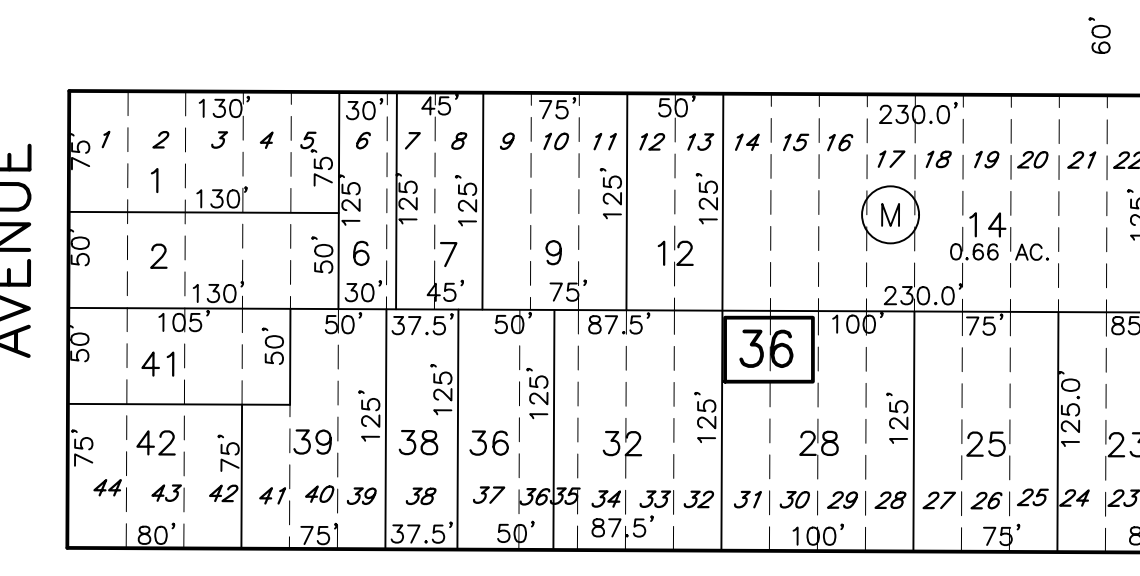


SEE SHEET 13



SEE SHEET 13



RANCOCAS

FINNEGAN WAY

### TAX MAP

**BURLINGTON TOWNSHIP**  
**BURLINGTON COUNTY, NEW JERSEY**  
**SCALE: 1" = 100'      OCTOBER 2004**  
**T. RONALD GSELL, P.E. & P.L.S.**  
**200 HIGH STREET, MOUNT HOLLY, N.J.**

THIS SHEET HAS BEEN GIVEN A FORMAL CERTIFICATION BY THE DIVISION OF TAXATION ON JULY 11, 2005, SIGNED BY JAMES COLL AND SANTO DIDONATO ASSIGNED SERIAL NUMBER 863.

THIS SHEET IS AN AUTOCAD GENERATED DRAWING. THIS WAS DONE UNDER THE SUPERVISION OF T. RONALD GSELL, P.E. & P.L.S., LICENSED LAND SURVEYOR N.J. LICENSE #12812, DATED OCTOBER, 2004. THE APPROVED ORIGINAL IS ON FILE IN THE BURLINGTON TOWNSHIP'S ASSESSOR'S OFFICE.

**NOTES:**

- (H) INDICATES BLOCK DESIGNATION ON FILED PLANS
- 12 INDICATES LOT NUMBER ON FIELD PLANS

| FILED MAP No. | TITLE                                   | DATE FILED |
|---------------|---|------------|
| 401           | PLAN OF PROPERTY OF LAKEVIEW REALTY CO. | 2-23-1912  |
| 404           | PLAN OF PROPERTY OF LAKEVIEW REALTY CO. | 4-9-1907   |
| 407           | PLAN OF PROPERTY OF SYLVAN LAKES PARK   | 10-23-1924 |

